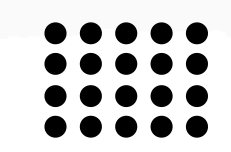




COMPANY PROFILE

Presentation - 2025



www.soulintec.com 



About Us

Soulintec is a leading Solution Provider of Industrial Automation, Control, Instrumentation and Services specializing in control systems integration and project management in GCC countries, Africa & Middle East

Soulintec is the outcome of more than 30 years of Hands on experience in the oil&gas, Petrochemical, industrial, water and waste water sectors with a n objective to provide an "excellent service" complying with the highest industrial standards, and unsurpassable quality of products and services.



Through the comprehensive and intelligent integration of our partners' products based solutions and services. Our activities are very strict to HSE (Health Safety Environment) system according to OSHA requirement to produce the ultimate quality on jobs.

We offer an extensive range of our partners' products and solutions focused on delivering turnkey solutions as one-stop-shop for customer automation system requirements.

Quality management: The company holds its ISO Certificate since 2009 for : Engineering, Design , Installation, Assembly, and Programming of automatic control , Identification and Measurement systems as well as Provision of Maintenance / Calibration, and Technical support for the same



Vision And Mission



Vision

Satisfying the increasing demand of our industrial partners for tailored sophisticated optimized solutions. Soulintec seeks to be a high quality solution provider for such needs across the Middle east and Africa.



Mission

Soulintec helps its customers optimizing their operating performance, increase productivity whilst increasing profitability and lowering operational costs through coping and driving new technologies. Our goal is the sustainable success of our customers

Our Partners



Our Customers



Special Expertise

A Metering and Truck Loading Systems

Metering systems and skids.

B Blending Systems and Grease Units

Very special expertise in all types of Blending

- Simultaneous Blending (SMB)
- Automatic Batch Blending (ABB)
- Inline Blending (ILB), with extensive know-how in blending standards.
- Grease Units system upgrade



Special Expertise

C Control and Automation

- Custom turnkey automation solution and service comprises SIMATIC family of process and factory automation (SCADA/HMI, PLC, ESD and DCS) for both, new projects and upgrade existing systems.

D Tank Gauging Systems

- Tank Gauging Systems including ATGs and RTGs



Special Expertise

E E&I projects

- Design and installation of all process measurement instrumentations including (level , flow, pressure, temperature, conductivity... etc;)

F Airports

- Fuel Hydrant System.
- Bagging Handling System (BHS) Automation.
- Leak Detection System.



Special Expertise

G Energy Saving

- Design and implementation Power saving application.
- Solar Power system, Drives and LED.
- Certified training provider (SEDA training center).

H Calibration , Training and Maintenance

- Automation demo units manufacturing for certified Siemens training center in Cairo and Alexandria (Soulintec training center).





Success Stories In

METERING AND TRUCK

LOADING SYSTEMS

Truck Loading System

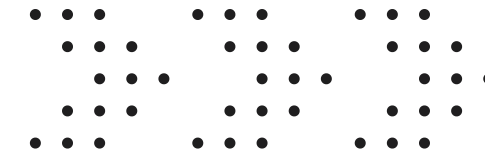
Installation of over hundred (100) truck loading lines, including:

- Turbine flowmeter.
- Coriolis flowmeters.
- Temperature transmitters.
- Control valves.
- Earthing System.
- Overfill protection.
- Daniel Danload-6000 and 8000
- electronic preset flow computers.
- Supply and installation of a Terminal Management System (DANTAS & Autoload & TMS6 & SYNCAD).

Customers ExxonMobil, Total, CPC, MPC, Wataniya, Nile, ALX-CT, TAQA



Additive Injection System



Design, supply, implementation, commission and start up of over 20 complete additive injection systems including the following

- Additive storage tank.
- Additive pump skids.
- Additive injector skids.
- Integration of the new devices to the electronic presets and TMS terminal management system.
- Mechanical installation of additive pipping network.
- Installation and termination of all associated cables.
- Shutdown management during installation and startup.

Customers ExxonMobil , TOTAL , TAQA





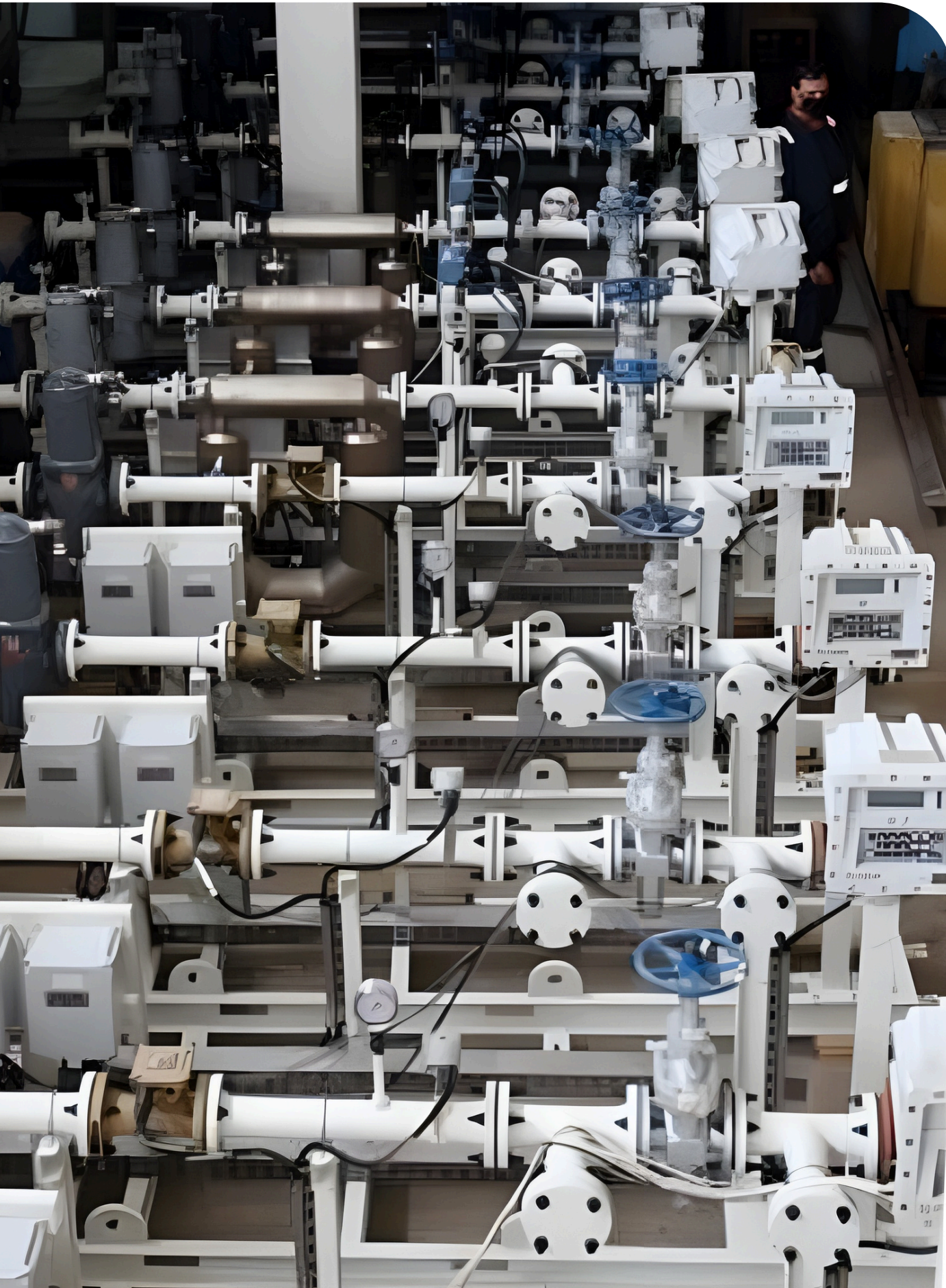
Design , assembly and Supply of 13 metering skids

Design , supply, fabricate all the skid's mechanical and electrical components.

- Engineering including multi-discipline 3D modeling of skid package design, fabrication, assembly, installation, configuration, commissioning, and startup of metering skids including meters, control valves and control system.
- Mechanical fabrication of skids and piping in accordance with ASME B31.3 , ASME VIII ,API and AWS D1.1
- Installation of an overfill system for trucks.
- Commissioning and start up the metering system.

Customers

Petrojet



Supply and Installation of Construction

Activities for TMS6 System

- Supply and installation of PLC S7-1200 Upgrade.
- Supply and installation of PLC S7-1500 Upgrade.
- RTG System Upgrade.
- Supply and installation of PLC HHL Alarm Upgrade.
- Supply and installation of Grounding System includes cables and accessories.
- Supply and installation of FO/EN Converters + Splices + Terminations (Qty:4)
- Supply and installation of Proximity Switches IS for Top Loading P+F Isolator Module 2XF (Qty:12)
- Supply and installation of UPS - 6KVA, zero ms, inline complete with power distribution panel (Qty:2)
- Supply and installation of SCADA Ignition Communication Cables and Converters.
- Supply and installation of the following Junction Boxes.
- Supply and installation of the cable trays.
- Supply, laying and termination of the cables.

Customers

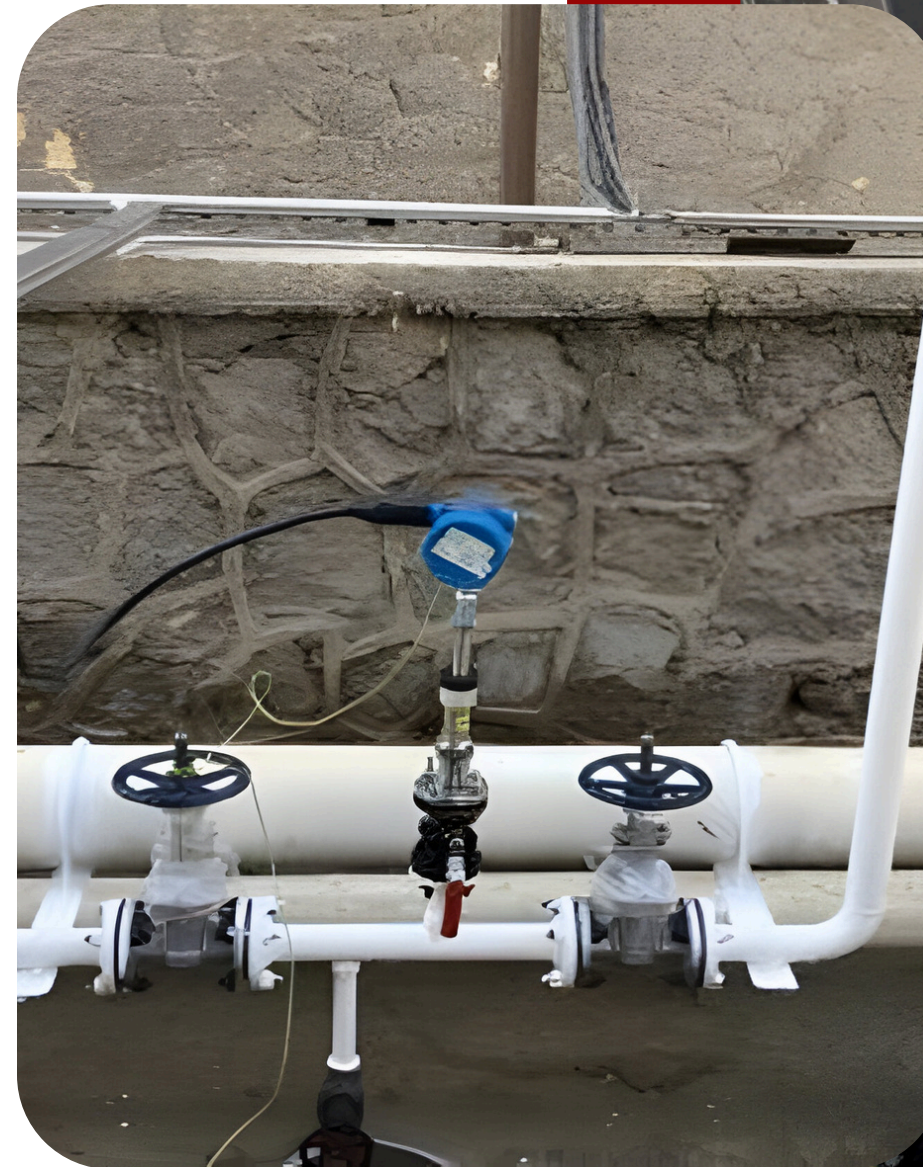
Petrojet

Supply and Installation of Conductivity Sensors

- Supply and Installation Conductivity Sensor for Inline conductivity & Temperature measurement conforming to ASTM D2624.
- Supply, Installation and Programming of PLC and HMI Control System.
- Supply, fabrication and installation of required pipe spools with all required fittings and accessories innovative a safe positive isolation inflatable plugs which achieve a high level of HSE procedures in conjunction with cold cutting process to reduce the hazardous and possibility of explosion.

Customers

ExxonMobil

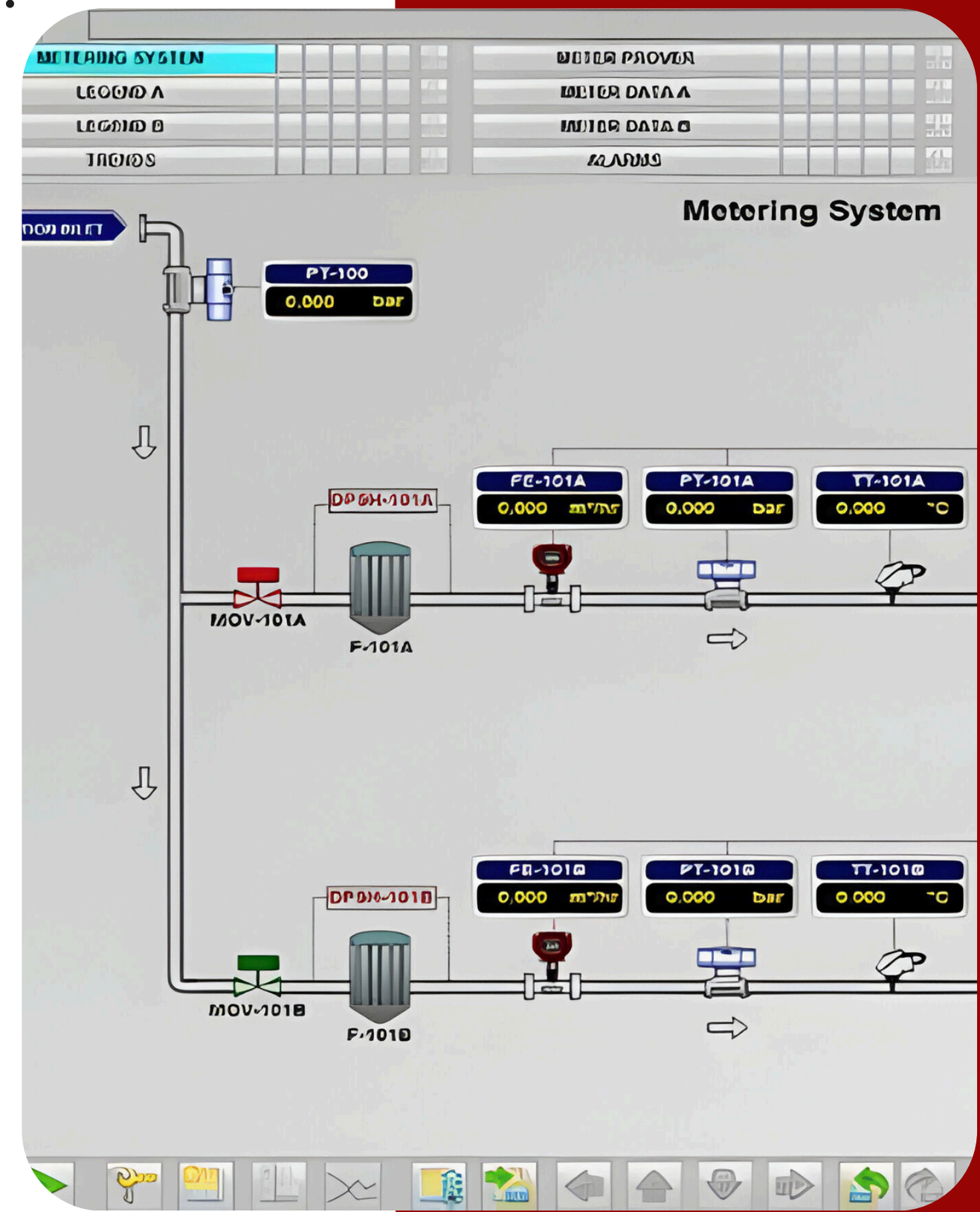


Metering Control System

Upgrade the Metering System at Agiba/ El-Hamra Terminal completed with SCADA control system

- All metering skid valves are remotely and automatically operated.
- The integrity and tightness of isolating valves are automatically checked and verified. The proving process is aborted in case of valve misalignment.
- PLC and SCADA are replaced by reliable and locally developed software.
- Proving results are automatically downloaded and stored in the meter control charts, proving data can be retrieved from this curve upon request.

Customers Agiba Petroleum Company



A detailed view of an industrial blending system. The system is composed of various components including pipes, tanks, and a control panel. The pipes are primarily blue and grey, with some white sections. There are several large cylindrical tanks, some of which are blue and others are white. A control panel with a digital display and buttons is visible in the upper right. The background shows a complex network of pipes and machinery, suggesting a large-scale industrial facility. The overall scene is well-lit, highlighting the intricate details of the equipment.

Success Stories In

BLENDING SYSTEMS

Implementation of Blending System Software



- Implementing New batch management software (Soulblend).
- Adding capacities of blend and dosing kettles also number of loops in ILB.
- Software implementation taking into consideration resolving existing issues.
- Commissioning and start-up.
- Customized Training on the newly implemented system.
- Provide Project Documentation including Software User Guide.

Customers

Exxon Mobil





Implementation of Blending System Software

- Redundant Master Servers – OS Servers.
- Route Control Server and Batch Server.
- Engineering Station.
- Two (2) Client Operator Stations.
- Automation System.
- Upgrade of existing PCS7 License.
- Upgrade of existing hardware for servers and clients.
- Providing new software to handle routing.

Customers

Exxon Mobil





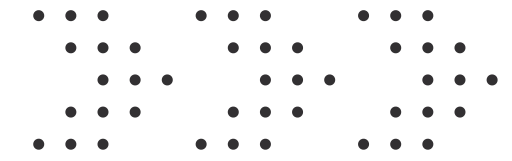
SCADA WinCC System

- The newly implemented software is customized and flexible to meet ExxonMobil operation's needs (Soulblend).
- Engineering works to cover SCADA System software implementation.
- Supply and assembly of server and clients rack panel.
- Supply and Install of Siemens managed Ethernet SCALANCE.
- Supply and install of UPS 6 KVA.
- Supply of KVM 8-Port PS/2-USB VGA Dual Rail
- LCD KVM Switch.

Customers

Exxon Mobil





Supply for Server Station

- Siemens rack PC series.
- Communication processor CP1623.
- WinCC system software V7.5 RT 8192.
- SIMATIC WinCC/Server V7.5.
- HARDNET-IE S7 V13 software for S7, open communication; OPC, PG/OP communication, Configuration software; up to 120 connections
- SIMATIC WinCC/Redundancy V7.5.

Supply for Client WorkStation

- Siemens rack PC series.
- WinCC system software V7.5 RT 128.

Supply for a Station to work as Server or Client

- Siemens rack PC series.
- Communication processor CP1623.

Customers

Exxon Mobil

Upgrade the Control System

- Supply, Integration, Installation, Programming, Commissioning and Startup of the new SIMATIC S7 PLC based automatic control system in addition to one SIEMENS WinCC based Control Terminal.
- The SCADA is programmed in order to contain all the manufacturing procedures and steps creating a dialogue between the operator and the control system and providing all the required interlocks that could prevent failures.
- Upgrade system to siemens PCS-7.

Customers

ExxonMobil



Batch Blending Modernization

Automatic Batch Blending Migration Project

- SIEMENS SIMATIC Migration for Automatic Batch Application from S5 to S7 (Supply, Installation and Engineering)
- Migration for SCADA from INTOUCH 5.0 to SIMATIC WINCC V7.0 (Supply, Installation and Implementation).
- Implementation of Batch Control Application Communication with Honeywell DCS , TDC3000.
- Commissioning and Startup of the two system.

Customers

Misr Petroleum

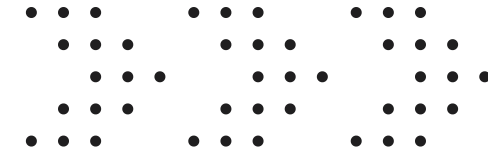


Warba (Seedawi sweets & SDFC/Wafra site) Kuwait Tank Farm Automation

- Control System.
 - a)SIEMENS PLC Supply, Installation, and Configuration
 - b)SIEMENS SCADA Supply, Installation, and Implementation
 - c)Commissioning and startup of the system
- Tank Gauging System, for Custody and Non-Custody Transfer Approved System.
 - a)Supply, Installation, Startup, and Commissioning of RTGs

Customers



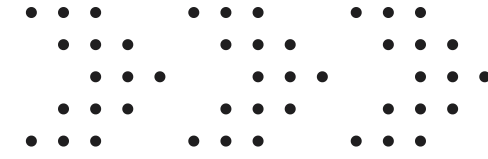


ACICO Cement (Kuwait) Control System And MCC

- Silos Control System
- MCC Supply and Installation



Customers

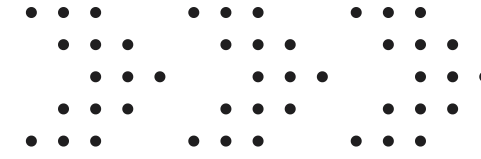


APSCO Blending System Upgrade

- Upgrading of the existing blending and grease system to latest Siemens PCS7 V9.1.
- In addition, evaluate the existing ILB System to check its performance to recommend the appropriate system enhancements or necessary upgrade.
- Supply and communication of field instruments (Level transmitters , level switches , temperature transmitters and control valves) for two new tanks.

Customers





Tazama Kigamboni Station (Tanzania)

- Pumps are responsible for boosting the flow in every station from Tanzania Dar el-Salam to Zambia (Lusaka)
- Pumps are sharing the loads automatically to maintain the outlet pressure for whole system
- Controlling the pumps , load sharing ,health monitors and interlocks, and all the critical variables to provide safety shutdown for the whole station

Customers





Kaduna Government House, Nigeria

- Monitoring and control of generator governor
- Circuit breakers normal operation and interlocks
-
- Periodic test and load management operations

Customers

Exxon Mobil





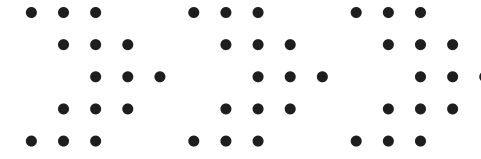
Central Bank of Nigeria



- The system is designed on 3 Generators responsible for backup system for the Bank
- Controlling the generators remotely from a SCADA system based on WinCC flexible RT
- Full archiving and trending of the generators variables
- Controlling the loads, priorities, and timers through the SCADA system

Customers

Central Bank of Nigeria

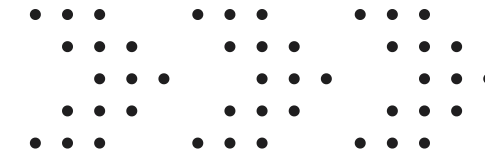


Tazama Elphinstone (Phase2), Tanzania

- The added feature in phase 2 is the load share which is done through Master panel
- Full monitoring and control for 5 PLCs through WinCC SCADA station
- Web navigator features are added to facilitate all monitoring and control to be done remotely from the center of excellence in Dar El-Salam

Customers



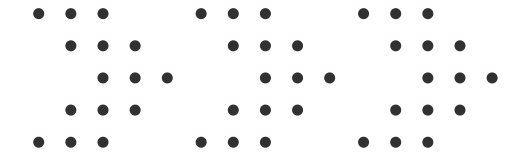


The Holding Company for Drinking Water and Sanitation Company / Petrojet

Control system for lifting pumping station at Samcrete

- Supply of Siemens control system based on SIMATIC S7-300, to control and monitor the operation of the pumps
- Control panel
- MIMMIC Panel
- PLC programming and SCADA implementation
- Commissioning and Startup of the system
- On site training
- PLC will control pump sequence based on start/stop periods and the running time for each pump





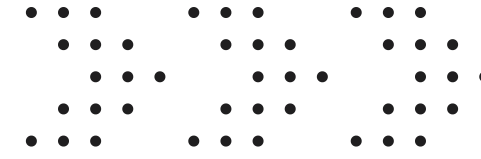
Arab Contractors / Badr City Administration

- Supply of Siemens control system based on SIMATIC S7-300, HMI, SCADA system.
- Control of the pumps based on input from Ultrasonic level transmitter indicating water level, level switches, total pump run time, and number of start per hour of each pump
- Supervising the installation of the system
- PLC programming and HMI implementation
- Commissioning and Startup of the system
- On site training
- PLC will control pump sequence based on control philosophy

Success Stories In

CONTROL AND AUTOMATION



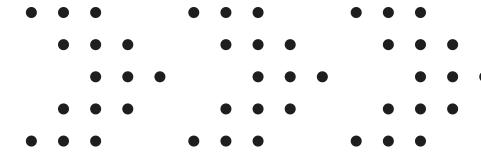


Upgrade in Hi Rise System

- Supply of warehouse management system developed by Soulintec
- Supply of servers, clients and network components.
- Supply and integration of plc components.
- Supply and integration barcode components.
- System implementation, commission, support and training.

Customers Exxon Mobil





Filling Machines Modernization

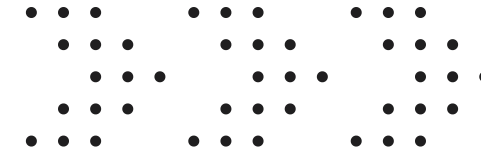
Upgrading PLC Control System from Moeller control system to Siemens SIMATIC S7-1500

1) Volumetric filling machine (Line J & K). "Qty:2"

- SIMATIC S7-1500, CPU 1511-1 PN.
- SIMATIC HMI TP1900 COMFORT
- Replacement of two position control system (Galil drives/Motors) into siemens SINAMICS S110 system.

Customers ExxonMobil , Misr Petroleum



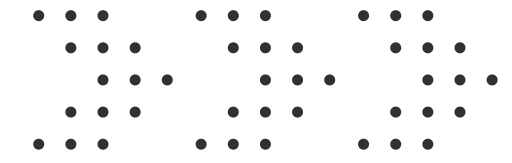


2) Rotating filling machine (Line H & I). "Qty:2"

- SIMATIC S7-1500, CPU 1511-1 PN.
- SIMATIC HMI TP1900 COMFORT, COMFORT PANEL, TOUCH OPERATION.
- SIMATIC ET 200SP.
- SIWAREX WP321 electronic weighing system 1 channel)
For connection of LOAD CELLS / DMS FULL BRIDGES (1-4 mV/V) FOR SIMATIC ET200SP



Customers ExxonMobil , Misr Petroleum



Sokhna Basin Pipelines Project Jushi and Ezz Pipeline

- Supply of PLC Stand-alone System based on S7-400 with Fail-Safe CPU and conventional IO cards.
- Engineering works to cover PLC Programming and all related documents, wiring diagram, configurations, function . diagrams, logic descriptions.....etc).
- Engineering works to cover SCADA Designing.
- Engineering shall include the communication between the 2 existing PLC(Siemens) with the new PLC(Siemens) in Jushi site.
- Engineering includes the communication between the existing HIMA PLC and ABB DCS system with the new PLC(Siemens) in Ezz site.
- Interfacing with existing HEMA PLC and ABB DCS system.

Customers Air Liquide





Process Control System Modernization

S5>S7 Migration of Steam Turbine Control System.
Migration from SIMATIC S5 to SIMATIC S7 of turbine Control system.

Turbine Control System

- Migration from SIMATIC S5 to SIMATIC S7.
- Migration from SIMATIC WinCC V6.2 to WinCC V7.2.
- Panel Building.
- Commissioning and Startup of the new supplied control system.

Customers Air Liquide



Fail Safe Process Control System

Supply of Boiler Management System (BMS) Control and Automation system

Boiler Management system

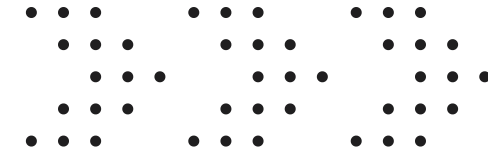
- 2 BMS control system for ASORC revamping boilers which shall manage the boiler start-up procedures and ESD signals.
- Siemens SIMATIC Failsafe system including: Engineering, Supplying, installation, commissioning and start-up and Training.
- Network communication establishments the new supplied SIMATIC Failsafe system with existing DCS "FOXBORO".

Customers Assiut Oil Refining Company (ASORC)

A photograph of an industrial facility featuring large metal storage tanks and a complex network of pipes and gauging equipment. A prominent vertical pipe with a spiral staircase-like structure rises from one of the tanks. The scene is set against a clear blue sky with light clouds. A semi-transparent red banner is overlaid across the middle of the image, containing white text.

Success Stories In

TANK GAUGING SYSTEMS



Automatic Tank Gauging System

ATG and RTG Systems

Soulintec – Encon is Egypt's pioneer tank gauging system provider, with installations over:

- 250 Automatic Tank Gauging (ATG) Devices (ENRAF)
- 170 Radar Tank Gauging (RTG) Devices (Saab Rosemount)

Tank Gauging System

Saab Rosemount – ENRAF

Customers :ExxonMobil , AMOC, Cairo AirPort, CPC , TOTAL, Gupco





Installation of RTG System at Three Army Terminals

- Mechanical and electrical installation of RTGs, temperature probes, pressure transmitters using cold-cutting M/Cs and overfill Sensors.
- Mechanical and electrical installation of Tank Hubs.
- Supply and installation of PC Servers / workstations required for Tank Master.
- Mechanical and electrical installation of Field Bus Modems (FBMs) / System Hubs.
- Supply and installation of communication panels required to connect with SCADA system at HQ.

Customers EMC





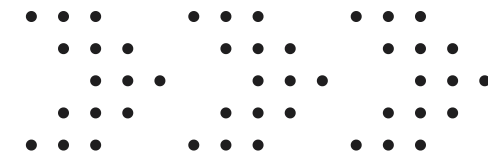
- Supply and installation of UPSs to feed the PCs and communication cabinets.
- Supply and installation of Control Panel to Control / Monitor the Overfill System c/w all modules, controllers, TBs and other requirements.
- Supply and installation a software for Truck Loading purpose (Truck Loading Software Application) complete with database and license covers the following features based on Manual Inputs.

Customers EMC



Success Stories In **E & I PROJECTS**

E&I Turnkey project



Soulintec was awarded the Implementation of the plant Automatic Control System and Electromechanical turnkey Project including

- Supply, calibration , installation and commissioning of 146 field transmitters.
- Fire alarm and CCTV system.
- Liquid leak detection system.
- Public address system and data network.

The state of the art SIMATIC S7-400H Hot Standby system with Profibus PA communication protocol.

The control system managed the tank filling process and safety interlock as well as the truck filling quantities, truck earthing and overflow protection

Customers Alexandria Chemicals Terminal





Relocation of BAPETCO Metering Skid

- MCC Panels.
- UPS Panel.
- Control Panels (PLC + Flow Computers).
- Server Panel + SCADA Workstation.
- Diesel Generator.
- Compressor.
- Motorized Operated Vales + Actuators.
- Metering Skids.
- Instrumentation.
- Lighting Fixtures.
- Grounding System at Site.
- Safety valves.
- Gas Chromatograph.
- Instruments Junction Boxes and Internal wiring.

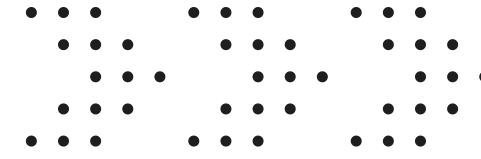
Customers Egypt Gas



A large commercial airplane is parked on a wet tarmac at sunset. The sun is low on the horizon, creating a warm glow and reflecting off the wet pavement. Ground crew members in high-visibility vests are visible near the aircraft. Various ground support equipment, including a mobile staircases and a service truck, are positioned around the plane. The scene is busy and captures the operational side of an airport.

Success Stories In

AIRPORTS



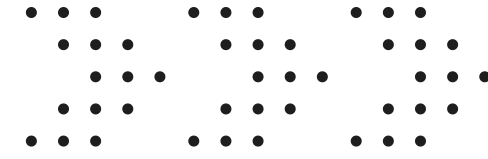
Airports Fuel Hydrants Projects

Modernizing and Increasing the capacity of the Aircraft Jet Fueling System

- PLC Control System Full Redundant SIMATIC S7 300.
- Graphic Control Interface SIMATIC WinCC V6.2.
- Field Instruments
- Tyco/Biffi Master Stations - 51 Tyco Motor operated valves
LonWorks Fiber Optics Network - RTGs

Customers Cairo International Airport
Hurgada International Airport





Airports Fuel Hydrants Projects

Luxor's Airport

- Tank Gauging System

•**Aswan's Airport**

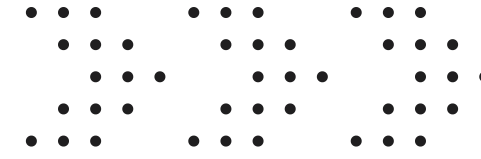
- Tank Gauging System

Dirab's Air Base (Saudi Arabia)

- Control System S7-1500 for aviation fuel station

Customers





Baggage Handling Systems

Soulintec delivered the mechanical and electrical installation of the Baggage handling system, including the control system Engineering, commissioning and startup from Vanderland Industries in Netherlands.

Baggage Handling System

- More over 5000mt of conveyors.
- Serving 110 Check Desks.
- Serving 7 Arrival Belts.
- 13 PLCs.

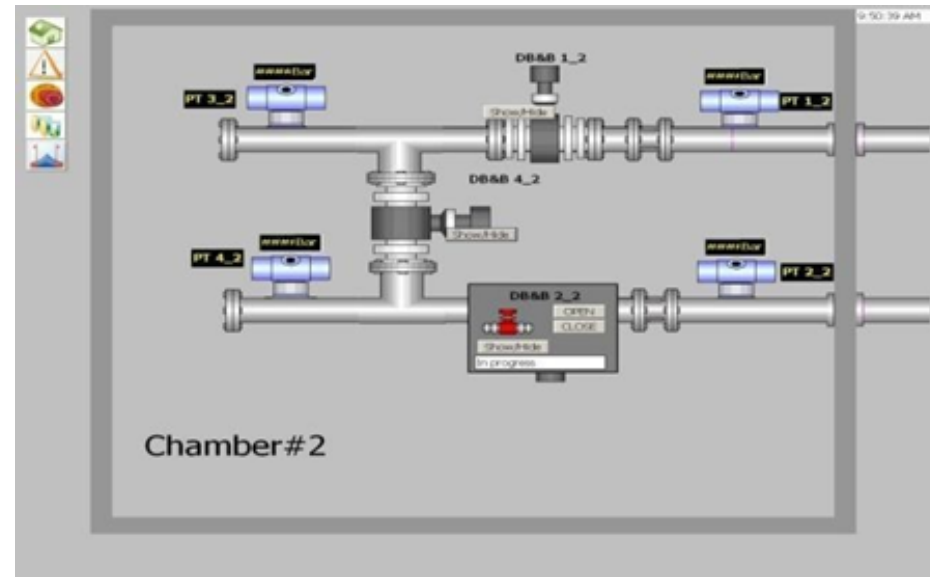
Customers Cairo & Sphinx & Bardawil and Berenice International Airports



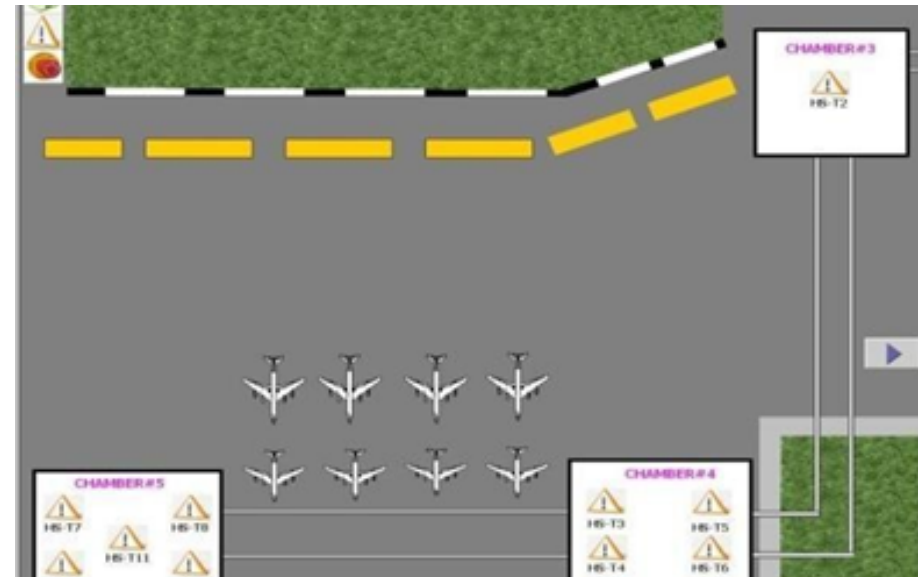
Leak Detection System



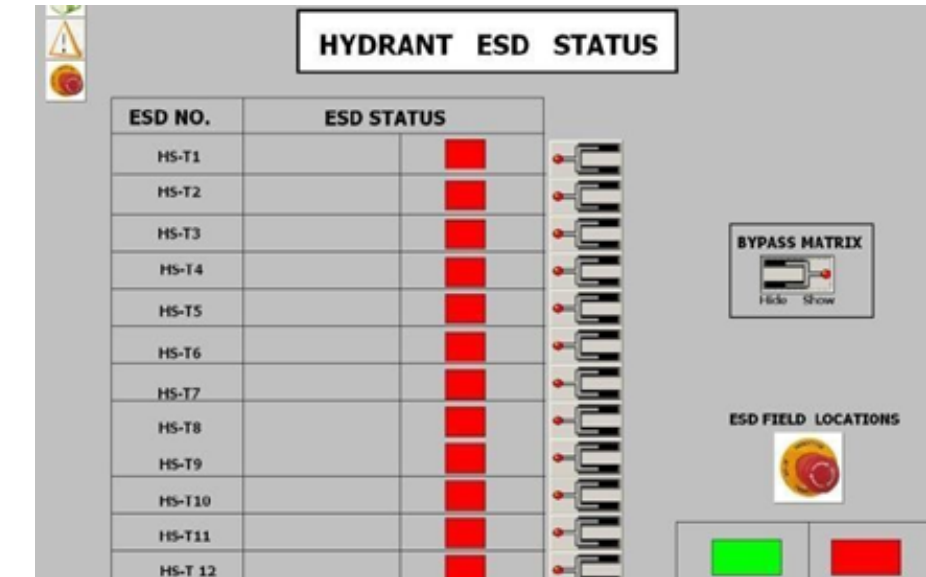
Design , installation , commissioning and start-up of Leak Detection System



Valves and Pumps Control

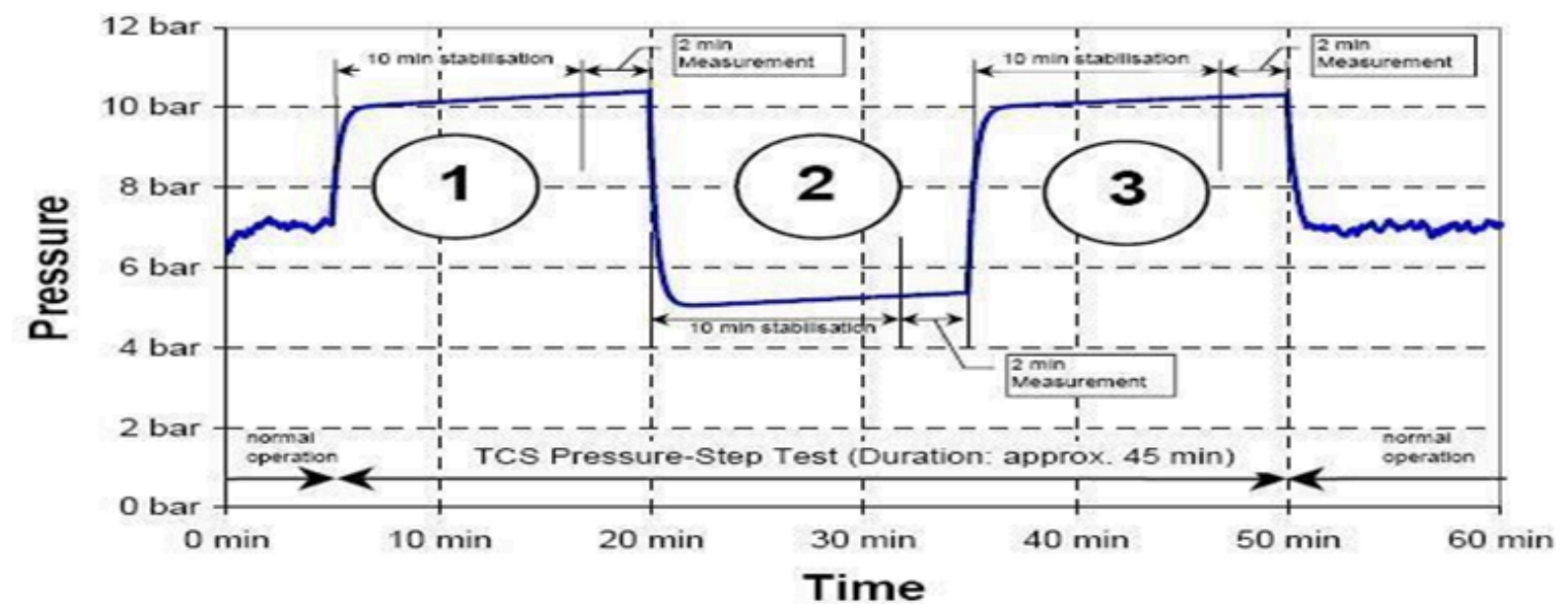


ESD Area Isolation, With Bypass Capability



Plotting Accurate Pressure Curves

Applying Pressure Step Method



Customers Borg Al-Arab International Airport



E&I Package for Alamién International Airport – Aircraft Fuel Terminal

- Supply, Install, Commission and Start up of Low Voltage Power and Control Panels.
- Supply, Install, Commission and Start up of SCADA System and PLC Pump Sequence System Siemens S7-1500.
- Supply of power and control cables.
- Supply of junction boxes.
- Install, Commission and Start up of E+H Radar Tank Gauging.
- Install, Commission and Start up of ISOIL Metering Skids.





E&I Package for Assuit International Airport – Aircraft Fuel Terminal

- Supply, Install, Commission and Start up of Low Voltage Pumps Panels.
- Supply, Install, Commission and Start up of SCADA System and PLC Pump Sequence System Siemens S7-1200.
- Supply of power and control cables.
- Install, Commission and Start up of Level Transmitters.



Success Stories In

ENERGY SAVING





Engineering and manufacturing of two steam letdown stations

- Design , supply and fabrication of steam letdown stations.
- Assembly of the insulated 8" & 6" pressure reduction stations with all its steam equipment , control valves and accessories.
- Enhancements of the steam network performance and efficiency in context of the sustainable development program.

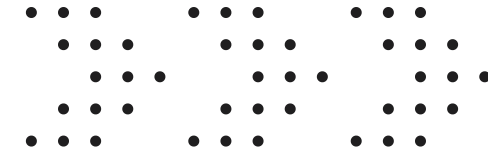


Customers Spirax Sarco , EPC



Success Stories In

TRAINING AND MAINTENANCE

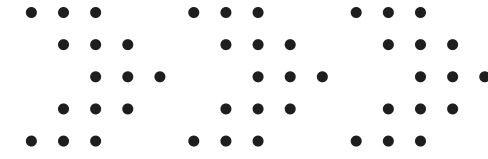


Calibration

All Soulintec's reference calibration equipment are traceable to NIS also the calibration team is certified from NIS and attended training courses at Fluke, Rosemount, Micromotion, SAAB, ENRAF.....etc Soulintec – Encon is currently in the process of preparing accredited calibration Laboratory which would be certified according to ISO/IEC 17025.

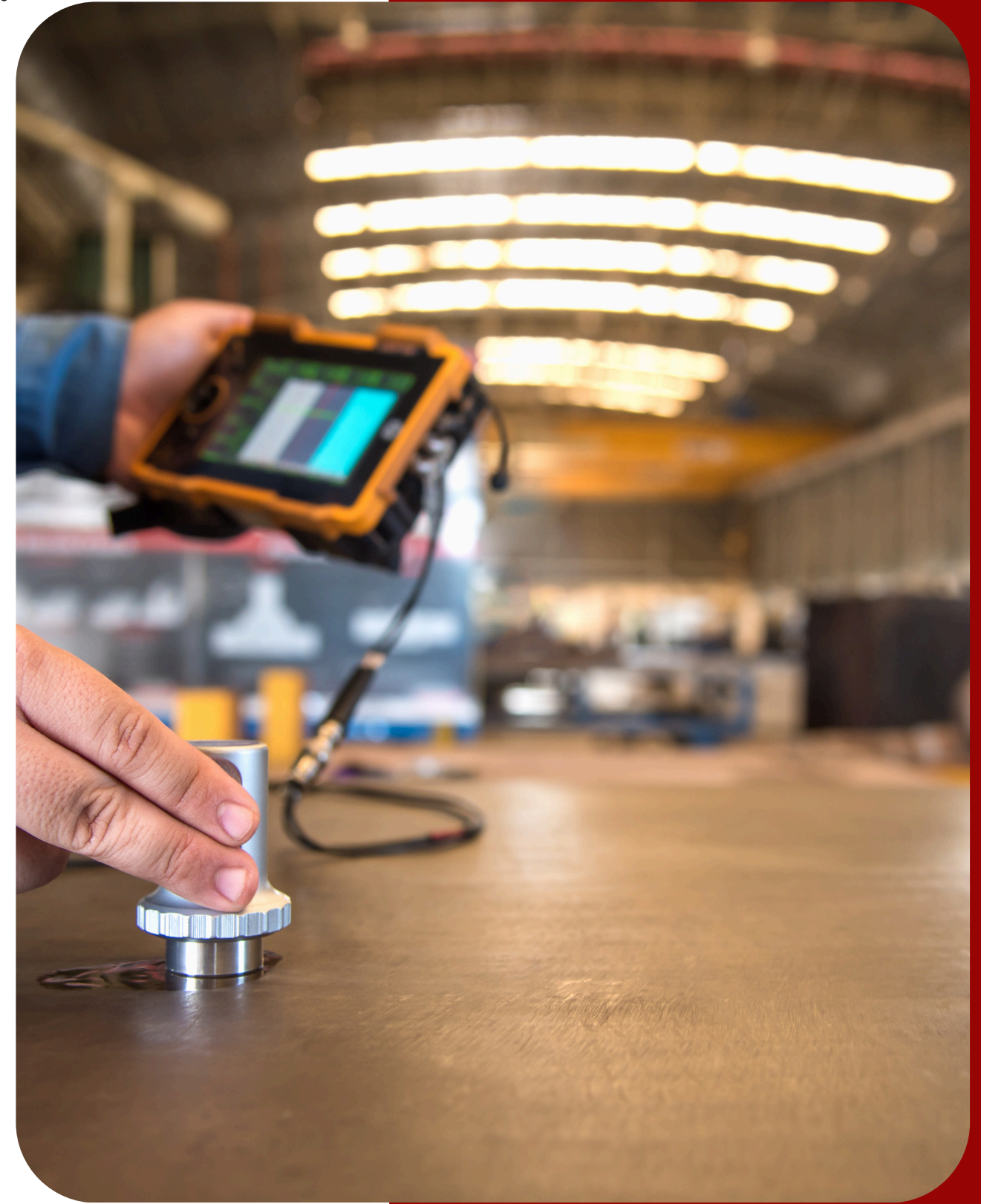


Customers Spirax Sarco , EPC



Calibration scope:

- Mass flow meters
- PD and turbine meters
- Prover tanks (manufacturing & calibration)
- Pressure Instruments (Transmitters, switches, indicators, relief valves....etc)
- Temperature Instruments (Transmitters, Sensors, Indicators, Controllers....etc)
- Weigh Scales & Masses
- PRVs & Breathing valves
- Level Switches & Transmitters



Customer List includes but not limited to:



- Air-Liquide: (Sokhna, Dekhela, Abo Kir, ELAB, Bani Swaif, 6th Oct., Port Said)
- Annual Contract (ExxonMobil Mex & Asher LOBP) 2002 – Now (TOTAL OPSBA)
- ExxonMobil Fuels (Mostorod, Mex, Suez)
- APSCO, KSA (Annual Calibration since 2004-now)
- TOTAL Egypt & Ex-Shell Egypt
- Mal-Pakistan (Formerly ExxonMobil Pakistan)
- MELUBCO (Middle East Lubricants Company UAE)

Customers Alexandria Chemical Terminal / Coca-Cola Egypt / PPC / Misr Petroleum / Cargill



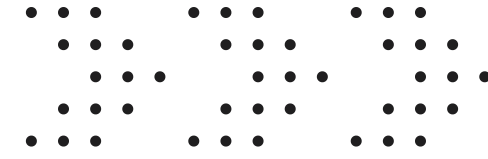


Calibration

Soulintec for Integrated Solutions has been accredited by EGAC in compliance with the requirements of ISO/IEC 17025:2017

- Calibration of Mass Flow Meter against Master Meter & Prover Scale (permanent / on site)
- Calibration of Masses Class M3
- Calibration of Balance accuracy class III & IIII
- Calibration of Temperature Devices
- Calibration of Pneumatic Pressure Devices
- Calibration of Hydraulic Pressure Devices
- Test of Safety Relief Valves



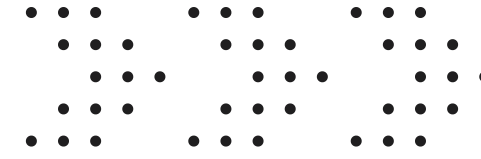


Training

Soulintec Training center and Instructors are SIEMENS certified as well as it is equipped with the following demo units:

- PLC (S7-300,S7-1200,ET200S)
- HMI/SCADA
- Motor and Drive Unit
- Conveyor Unit
- Process Instrumentation Unit
- Actuator Sensor Interface (AS-i)Unit
- Mechatronics
- Solar Energy Laboratory (On grid- Off grid)



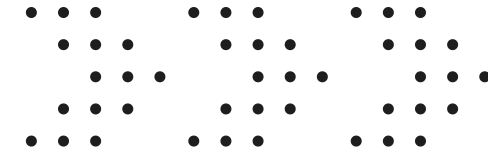


Training

SIEMENS Courses (conducted using SIEMENS Training Material):

- SIMATIC S7 TIA- Programming 1, 2, 3
- SIMATIC HMI WinCC Flexible
- SIMATIC HMI Operating and Monitoring with WinCC
- SIMATIC S7 TIA- Service 1, 2, 3
- PLC and Control Fundamentals
- Micro Master 4XX Basic
- Actuator Sensor Interface (AS-i) System
- SIMATIC NET PROFINET System
- SIMATIC PCS 7 System
- SIMATIC NET PROFIBUS-DP System





Training

Other Courses:

- Petroleum Measurement (Static and Dynamic Measurements)
- Solar Energy: On-grid photovoltaic (advanced engineering and Technicians courses)



Maintenance

Maintenance Contracts

- Customer list for fuel marketing



- Customer list for Lube Oil Blending Plant





Why customers prefer us ?

Soulintec being fundamentally customer oriented and motivated by customer satisfaction does not end its relation with the customer by job termination.

Also, Our Team provides full aftersales technical support, maintaining highest level of professional service. The permanent core staff comprises well-trained personnel in various fields to cover the complete scope of activity.



We have a very clear set of values which is our main drive to success and we hire people who share these values and principles.

Optimum Integration – Excellent Service – Customer Focus – Responsibility

Contact Us

AlexOffice: EleshrinSt.,Green Towers, Building #5, 1st floor,Semouha

CairoOffice: 470YoussefEl- Gendi St., El-Narges, Ground floor,5th Settlement

Tel: +2034277107 /+2023622020

Fax: +2034277108

Email: Contact@Soulintec.com

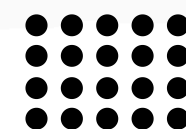
Website: www.Soulintec.com





Thank You

For Your Attention



www.soulintec.com 